



Mayfield



BRANDYWINE
HOMES

WELCOME HOME TO MAYFIELD

Create new memories in a beautiful new single-family home with modern features and timeless comforts at Mayfield in friendly Glendora — home of historic Route 66.



LEGEND



PLAN 1



PLAN 2

M - MODEL

SO - SALES OFFICE

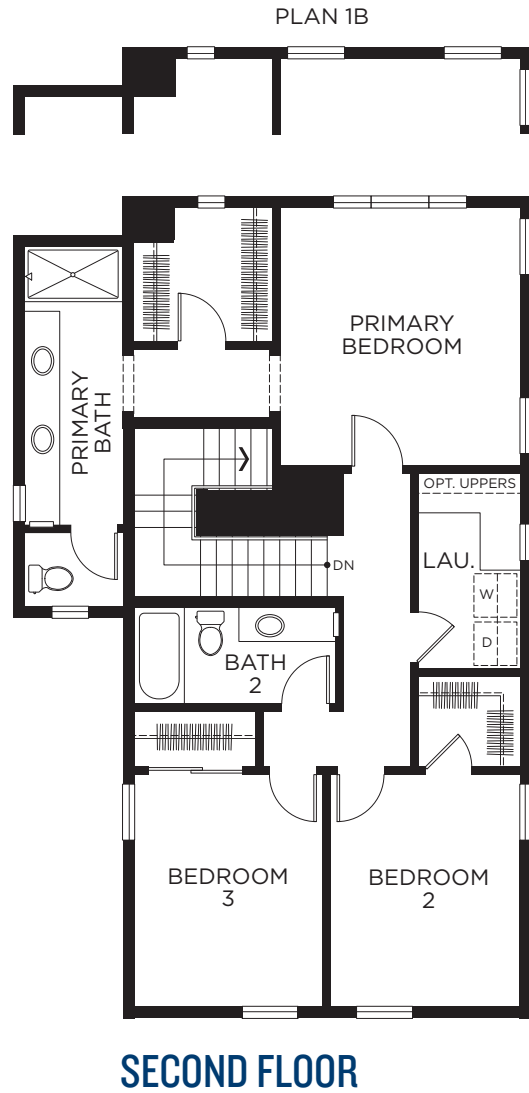
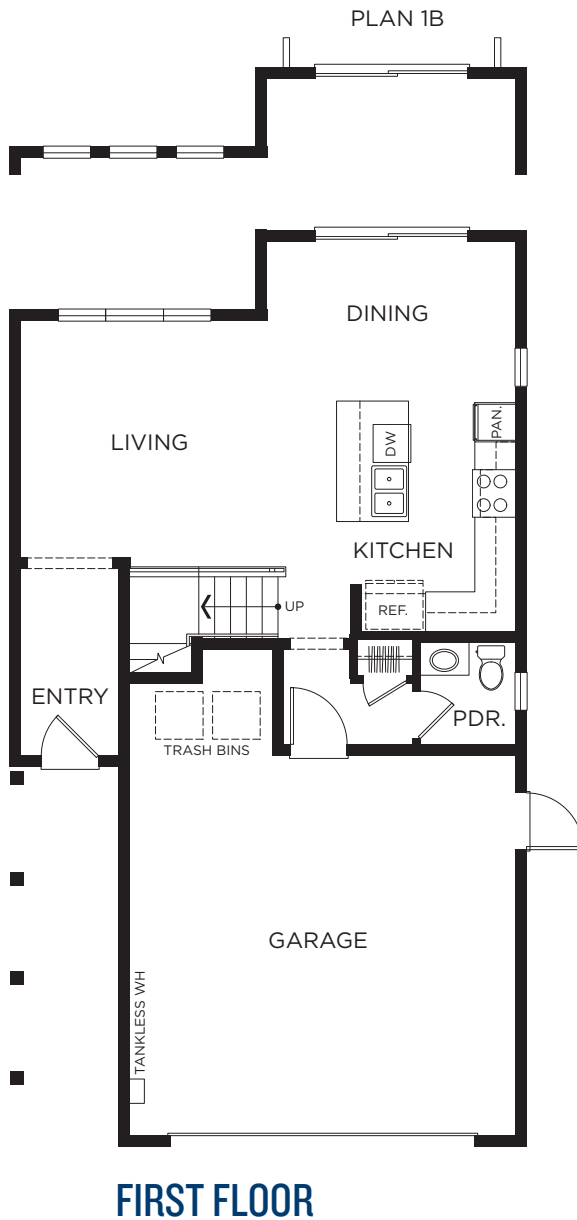
R - REVERSE



NOT TO SCALE

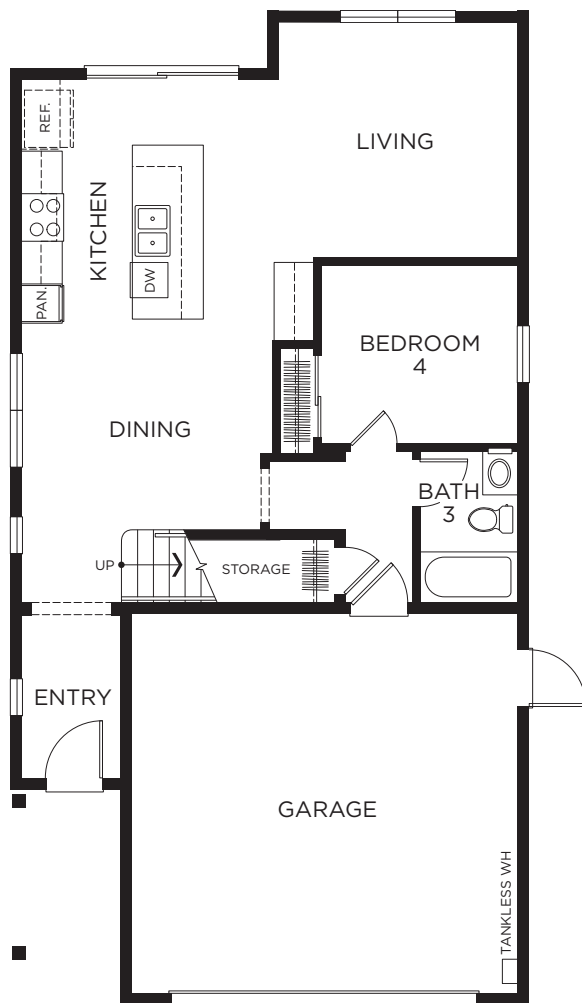
PLAN 1A

3 Bedrooms, 2.5 Baths
Approx. 1,639 Sq. Ft.

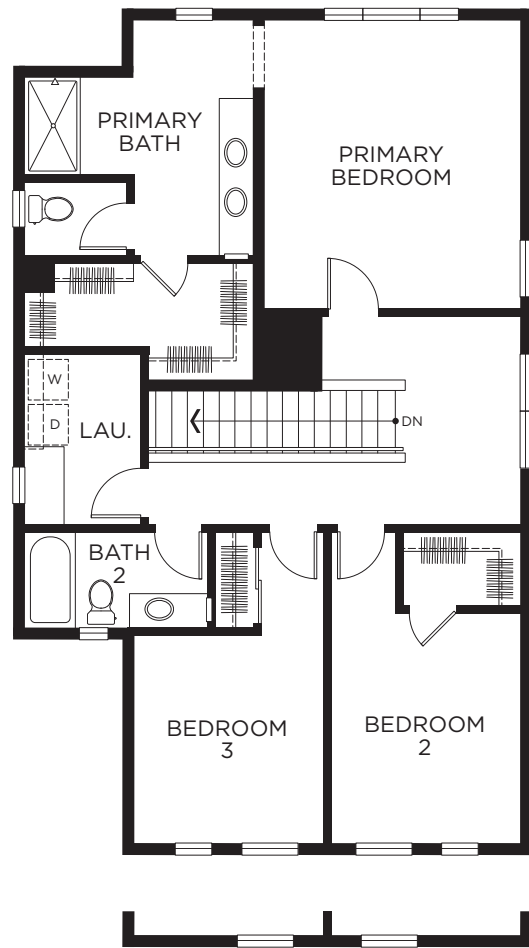


PLAN 2A

4 Bedrooms, 3 Baths
Approx. 1,969 Sq. Ft.



FIRST FLOOR



PLAN 2B

SECOND FLOOR

INCLUDED FEATURES

Energy Efficiency

- Solar included
- LED surface-mount lighting throughout
- Rheem® space saving tankless water heater
- Central heating and air conditioning with programmable, night setback, digital thermostat
- Dual glazed white vinyl windows
- Water efficient toilets
- Low VOC interior paint
- Water efficient plumbing
- Future conduit for electrical vehicle charging station
- Wayne Dalton® 9100 insulated garage doors with Liftmaster® Stockton II

Exceptional Interiors

- Kwikset® Breton satin-nickel lever handle door hardware throughout
- Designer selected Moen® polished chrome plumbing fixtures
- Dal One Quartz® counters with 4" backsplash at secondary baths
- Subway tile tub/shower surround at bath 2 and bath 3
- Elongated toilets in powder, bath 2, and bath 3
- Chrome trim with 1/4" clear tempered glass at shower at bath 3

- Oval undermount sinks at bath 2 and bath 3
- Wall mounted handrails with satin nickel brackets
- Western pottery pedestal sink at powder

Spacious Gourmet Kitchens

- Dal Quartz® countertops with 6" backsplash in choice of 3 colors: simply white, simply beige, or simply gray
- Kitchen Island
- Front control Samsung® stainless steel slide-in gas range with convection and 5 burners
- Microwave and hood stainless steel combination with LED display
- 4-cycle, 5 options digital controlled stainless steel dishwasher
- White Thermofoil Shaker style cabinets with satin nickel pulls
- Stainless steel undermount dual sink with Moen® pullout Arbor spray faucet
- InSinkErator 1/2 horsepower garbage disposal

Inspired Primary Suites

- Dal One Quartz® counters with 4" backsplash in morning frost color
- 3-wall composite, subway tile shower with seats
- Chrome trim with 1/4" clear tempered glass at shower

- Polished edge medicine cabinet
- Dal® oval undermount sinks
- Moen® polished chrome Gibson hardware
- Primary baths with separate elongated toilets
- Walk-in closets

Refined Exteriors

- Modern craftsman architecture with accents
- Bronze finish address light with matching porch light

Smart Home

Throughout each residence, you'll discover hand-selected features & finishes to make life better than ever.

- Honeywell® T6 pro smart thermostat
- Brilliant® all-in-one smart home control
- Ring® video doorbell
- Liftmaster® garage door opener

Personalized Enhancements

Mayfield offers many opportunities to personalize your home with a variety of options and upgrades. Please consult a New Homes Sales Counselor for details.

About Brandywine Homes

A family-owned and operated homebuilder and community developer, Brandywine Homes is proud to celebrate over 25 years of developing land and providing quality homes for Southern Californians. We pride ourselves on attracting and retaining the industry's most talented and dedicated employees whose expertise reflects that of our principals.

Our broad capabilities can be seen in the wide variety of housing we have successfully developed from inspired townhome collections to luxurious, single family homes to semi-custom, estate-sized homes. We offer the diversity necessary to build homes in communities throughout Southern California, from new suburban developments to urban infill locations.

At the foundation of every Brandywine Home is our utmost dedication to excellence. A recognized leader in challenging infill projects, Brandywine continues to revitalize a number of Southern California's oldest and most established towns, rich in history. We build homes that respect and complement the heritage, values and architectural integrity of existing neighborhoods and the people who live there — while also making a positive contribution to the community.

Mayfield

