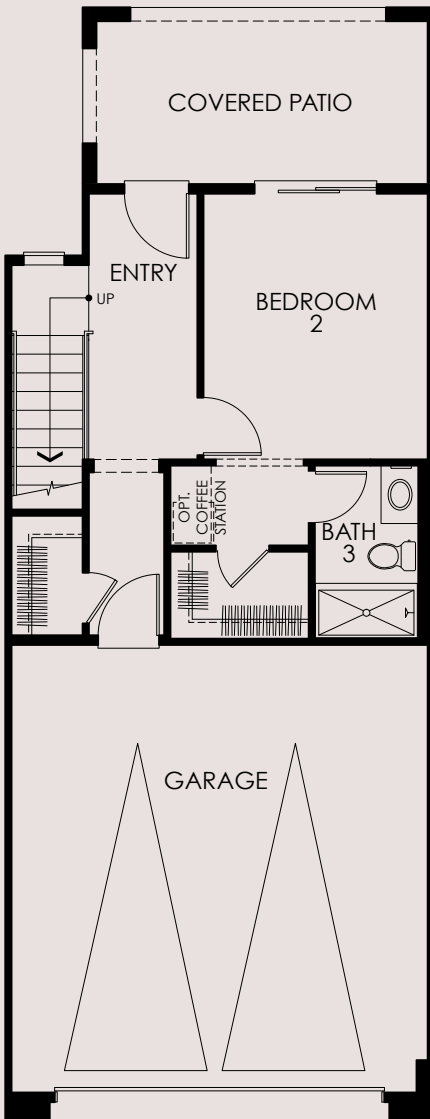
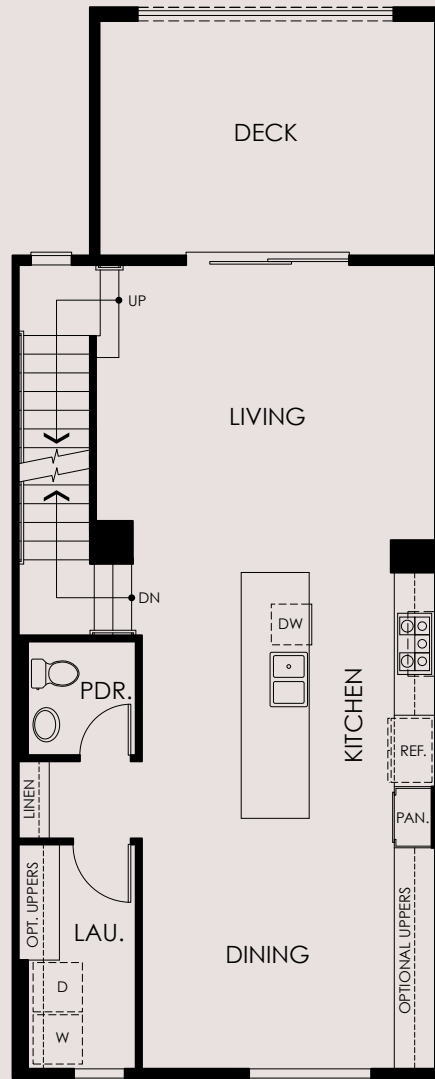


PLAN FOUR

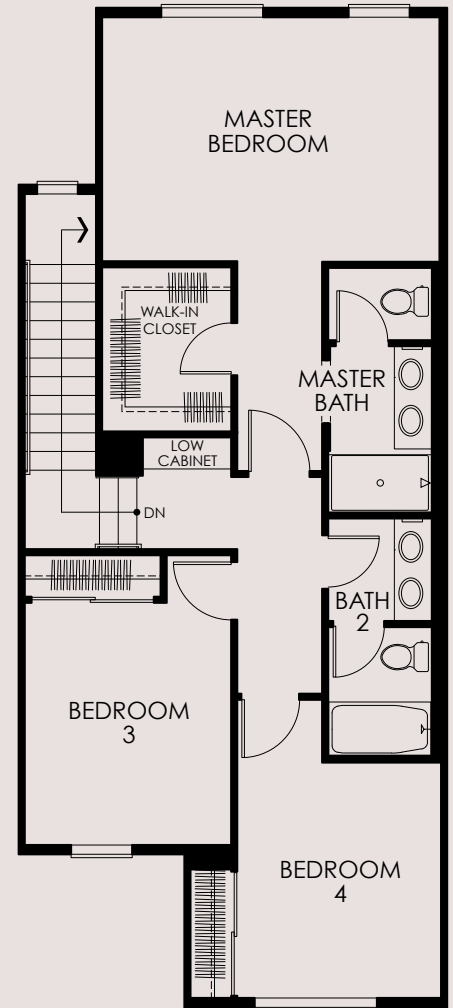
4 Bedrooms • 3.5 Baths • Approx. 2,088 Sq. Ft.
First Floor Bedroom Suite with Walk-In Closet
Generous Kitchen Island • 2-Car Garage Covered Patio/Deck



FIRST FLOOR



SECOND FLOOR



THIRD FLOOR



562.273.2721 WhittierNewHomes.com
Sales Center 14000 Telegraph Rd., Whittier, CA 90604

©2019 Brandywine Homes. All Rights Reserved. Brandywine Homes reserves the right to change sales prices, delete or modify floor plans, elevations and specifications without notice or obligation. Contact a Sales Representative for further details.
DRE#01381133

